

# PREMIER SERIES

## High-Speed Quality Labellers

### Aesus Premier Wrap



Our Premier series of Labelers include the powerful Servo Herma H400 head capable of dispensing labels at 160 Meters/minute.

Labeling speeds depend on label and bottle size but speeds in excess of 300/minute are obtainable.

The stainless steel base Cabinet, has an overhead color touch screen, which includes recipe management.

A heavy duty mounting plate parallel to the conveyor gives extra rigidity for preferred mounting of Coders, Vision systems, scanners or other options, but does not stick out into the aisleway.

Raised bed Stainless Conveyor, dial indicators, inset scales, and infeed separation wheel, are all standard.

### Aesus Premier Panel



Front, back, 3panel and 4 panel and 5 panel labeling with speeds up to 200 per minute the Premier-Panel include the powerful Servo [Herma 400](#) head(s) and a stainless base Cabinet, with stainless clad top plate.

Overhead touch screen control with recipe management, 10' long Raised bed Sanitary Stainless Steel conveyor, 48" Top hold down belt mechanically synchronized, complete with product separation wheel.

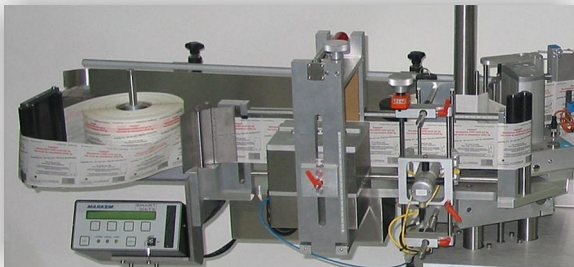
The heavy duty mounting plate gives extra rigidity for preferred mounting of Coders and Vision systems.

Dial indicators for ease of repeat set ups, heavy duty 48mm diameter shafting for effortless adjustments. Core adjustments for Worm or Belt aligners built into the machine.

We include on our Premier Series everything we believe is needed for the ultimate in Labeler friendliness!

Did we forget to say something?  
If so it is probably there....  
we tried to include most things you would need

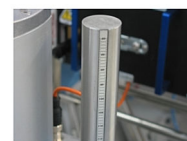
### Heavy Duty Mounting Plate



The heavy duty mounting plate is arranged conveniently along the length of the labeler so that it does not stick out into the aisle way. It is solid to give extra rigidity for preferred mounting of Coders and vision systems.

### Easier Set ups

Dial indicators for ease of repeat set ups, scales inset into shafting, and heavy duty 48mm diameter shafting for effortless adjustments are all included where needed.





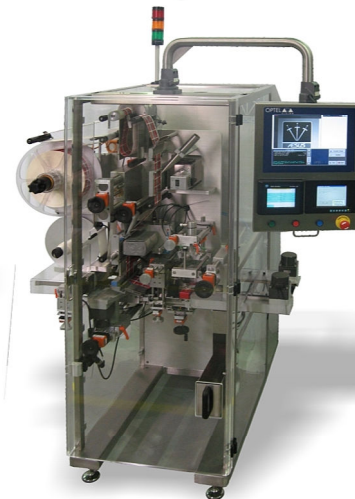
**HERMA****Leading by a Head**

## Premier Wrap Plus

Products are loaded from the conveyor into a starwheel with twin rollers at each starwheel pocket. The starwheel rotates to the labeling station located adjacent to a motorized wrap belt. The product is therefore securely held at 3 separate stabilizing points. With the container so stable, a label is perfectly applied. The wrap around belt finishes the job by turning the product with its label still securely held. As the rotation speed of the product is higher than the transportation speed of the product, the application of the label can reach very high production rates of 300 per minute and higher.



## Premier Top Labeler



This Premier Top Labeler has all our excellent Premier features along with a special swivel overhead control panel which houses the Vision System controls, the Labeler Color touch Panel, as well as the controls for the special Laser coder. All the mounting bracketry and integration of these sophisticated pieces of equipment is carried out by Aesus.

What is particularly interesting is the very narrow footprint for this machine.

## Premier Top and Bottom Labeler



This is a unique labeler and is equipped with Coder, Vision system, reject system, UV verification and more.

Fully guarded Premier Top and Bottom labeller, complete with infeed product orienter, hot stamp coder, bar code reader, UV Label presence detector, reject shelf. All adjustments either by recipe management or with dial indicator gauges for easy repeat set ups.

## Recipe Management

User friendly Color Touchscreen incorporates recipe management for easy recall of previous set ups.



## Optional Systems available

### Container Handling Options

- Prism roller system ➤ Tall Wrap Belts ➤ Reject Station
- Product Aligner - Belt System ➤ Product Aligner - Worm System

### Label Handling Options

- Oversize infeed reels ➤ Tall label extenders ➤ Motorized power rewind
- Motorized power unwind ➤ Low and broken web detectors
- Hot Stamp Coder ➤ Thermal Printers ➤ Missing Label Detector
- Luminescence Detector ➤ Bar Code Readers

### Other Options

- Safety Guarding ➤ Extended Conveyor ➤ Verification System
- Vision Systems ➤ Other Voltages

## Aesus Labelling Systems

188 Oneida, Pointe Claire, Montreal, Quebec, H9R 1A8, Canada  
t: 514-694-3439 f: 514-694-4107

## Many Other configurations are available

Aesus specialise in providing a huge variety of Labelling solutions, from our Eco Series through our Delta series up to these Premier units.

Customers have thrown us a myriad of labeling challenges along with many standard solutions. We can not possibly show all we have done in a brochure, but we hope the sampling shown here will give you the confidence to ask us to provide you with an offer.

PREMSERIESLAB 20080122 P2

**AESUS****Labelling Systems****WWW.AESUS.COM**